

LPC-101W

10.1" Panel PC, Intel® Braswell
Celeron® N3160, IP65 Compliant
Bezel & Wide Range Power Input



Optional Full HD

Features

- ▶ Intel® Celeron® N3160 Quad Core 1.6GHz
- ▶ IP65 Compliant Front Bezel
- ▶ Fanless Design
- ▶ 3-Pin Power Inputer Terminal Block
- ▶ DC 9~36V Wide Range Power Input
- ▶ Resistive Touch Screen
- ▶ 1280*800 High Resolution LCD
- ▶ 500 nits LED Backlight
- ▶ 1000 nits LED Backlight (Optional)
- ▶ Optional Full HD 1920*1080



Product Overview

Incorporated 10.1" 16:10 touch screen LCD panel with resolutions up to 1280*800 and 500 nits LED backlight brightness, motherboard for versatile industrial applications, LPC-101W is fanless Panel PC based on Intel® Celeron® N3160 SoC processor. The touch screen provides the durable, reliable, and scratch-able benefits for easy maintenance in wide applications, especially for food, beverage, factory, automation and traffic control.

Specification

System	
Processor	Intel® Celeron® N3160 SoC CPU
System Memory	Default 1 x 4GB DDR3L SO-DIMM, up to 8 GB
External I/O Port	4 x USB 3.0 2 x GbE LAN (RTL8111G) 1 x Display Port 1 x HDMI 2 x RS-232 1 x RS-232/422/485 1 x Audio 1 x Power press button 1 x 3-Pin Power Input
Storage	1 x SATA3 (6.0Gb/s) 1 x mSATA (full size mini-PCIe)
Operating System	Windows 7 Pro, Windows Embedded Standard 7, Windows 8, Windows 10

Power Requirement	
Power Type	3-Pin Power Inputer Terminal Block DC 9~36V Wide Range Power Input

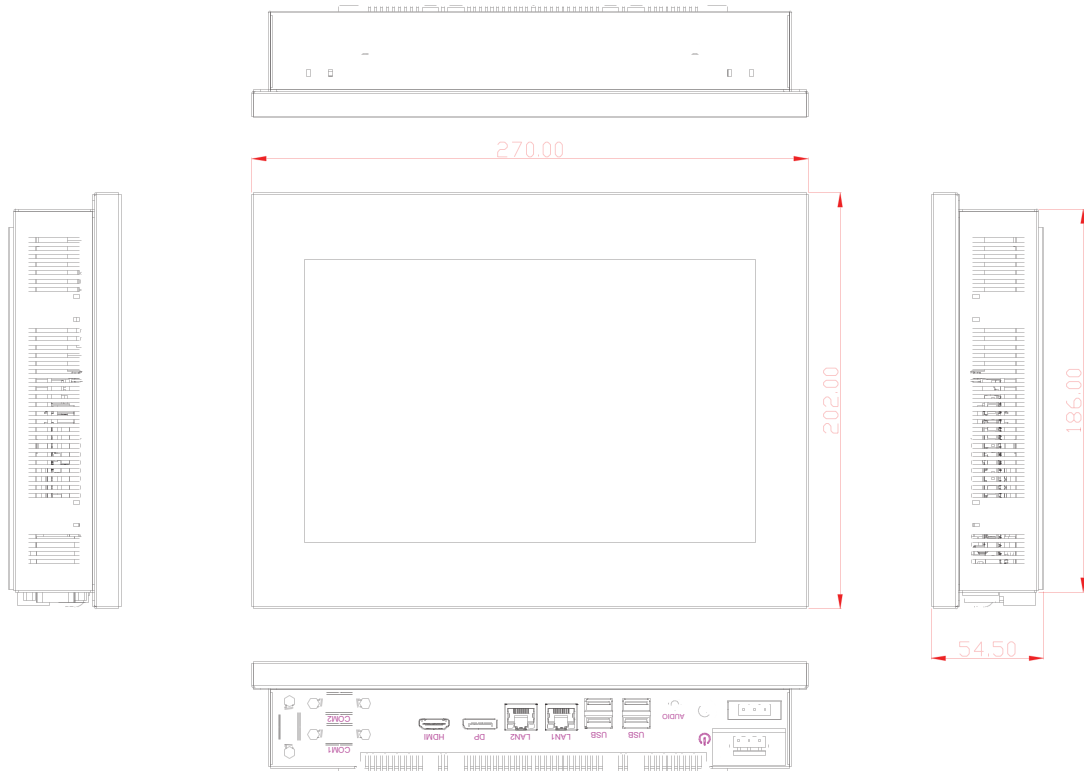
Touch Screen	
Type	4 Wire Res with USB Interface

LCD	
Display Type	10.1" TFT-LCD
Max. Resolution	1280 x 800
Max. Color	16.7 M
Luminance (cd/m2)	500 nits
View Angle	170 / 170
Backlight Lifetime	50,000 hours

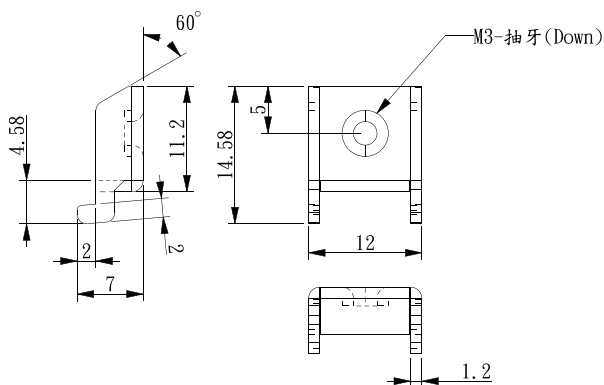
Mechanical	
Construction	Metal
IP Rating	Front Panel Compliant IP65
Mounting	Panel Mount VESA Mount 75x75
Dimension	270 x 202 x 54.5 mm

Environment	
Operating Temp	0~55 °C
Storage Temp	-20~70 °C
Humidity	10~90% @40 °C, non-condensing
Certificate	CE / FCC Class A

Dimension & I/O Connector



Mounting Kit



Ordering Information

TS1GSK64W6H	8 GB DDR3L 1600 SO-DIMM
TS32GSSD420K	32 GB SSD , SATA3, MLC
TS64GSSD420K	64 GB SSD , SATA3, MLC
TS128GSSD420K	128 GB SSD , SATA3, MLC
TS16GMSA370	16GB, mSATA SSD, SATA3, MLC
TS32GMSA370	32GB, mSATA SSD, SATA3, MLC
TS64GMSA370	64GB, mSATA SSD, SATA3, MLC

Ordering Information

LPC-101W	10.1" Panel PC, Intel® Celeron® N3160, 4 GB DDR3L, 500 nits LED backlight 3 COM, 4 USB, 2 LAN, DC 9~36V with 3-pin Power Terminal Block
LPC-101WH	10.1" Panel PC, Intel® Celeron® N3160, 4 GB DDR3L, 1000 nits LED backlight 3 COM, 4 USB, 2 LAN, DC 9~36V with 3-pin Power Terminal Block
04-US-26-00001	60 W / 12V power adapter with 3 pin terminal block
04-US-26-00002	120 W / 24V power adapter with 3 pin terminal block (For high brightness model)
WFK-024	Wi-Fi kits w/ cable & Antenna (2.4GHz, 802.11 b/g/n, 1T1R)
WFK-524	Wi-Fi kits w/ cable & Antenna (2.4 & 5GHz, 802.11 a/b/g/n/ac + BT, 2T2R)
PB-936	Power Board for Input on board fuse / Input reverse protection / Over current protection / Output short circuit protection