

LPC-121S

12.1" Panel PC, Intel® Braswell Celeron® N3160, IP65 Compliant Bezel & Wide Range Power Input



Features

- ▶ Intel® Celeron® N3160 Quad Core 1.6GHz
- ▶ IP65 Compliant Front Bezel
- ▶ Fanless Design
- ▶ 3-Pin Power Inputer Terminal Block
- ▶ DC 9~36V Wide Range Power Input
- ▶ Resistive Touch Screen
- ▶ 800*600 Resolution
- ▶ 1024*768 Resolution (Optional)
- ▶ 350 nits LED Backlight
- ▶ 500 & 1000 nits LED Backlight (Optional)



Product Overview

Incorporated 12.1" 4:3 touch screen LCD panel with resolutions up to 1024*768 and 350 nits LED backlight brightness, motherboard for versatile industrial applications, LPC-121S is fanless Panel PC based on Intel® Celeron® N3160 SoC processor. The touch screen provides the durable, reliable, and scratch-able benefits for easy maintenance in wide applications, especially for food, beverage, factory, automation and traffic control.

Specification

System	
Processor	Intel® Celeron® N3160 SoC CPU
System Memory	Default 1 x 4GB DDR3L SO-DIMM, up to 8 GB
External I/O Port	4 x USB 3.0 2 x GbE LAN (RTL8111G) 1 x Display Port 1 x HDMI 3 x RS-232 1 x RS-232/422/485 1 x Audio 1 x Power press button 1 x 3-Pin Power Input
Storage	1 x SATA3 (6.0Gb/s) 1 x mSATA (full size mini-PCIe)
Operating System	Windows 7 Pro, Windows Embedded Standard 7, Windows 8, Windows 10

Power Requirement	
Power Type	3-Pin Power Inputer Terminal Block DC 9~36V Wide Range Power Input

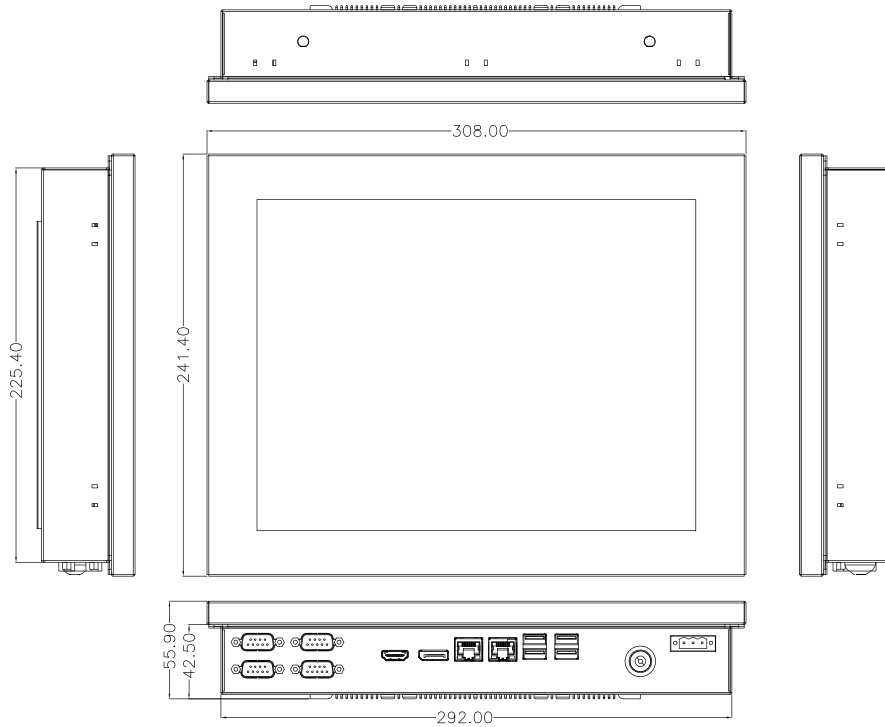
Touch Screen	
Type	5 Wire Res with USB Interface

LCD	
Display Type	12.1" TFT-LCD
Max. Resolution	800*600 / 1024*768
Max. Color	262K / 16.7 M
Luminance (cd/m2)	350 nits / 500 nits / 1000 nits
View Angle	160 / 140
Backlight Lifetime	30,000 hours

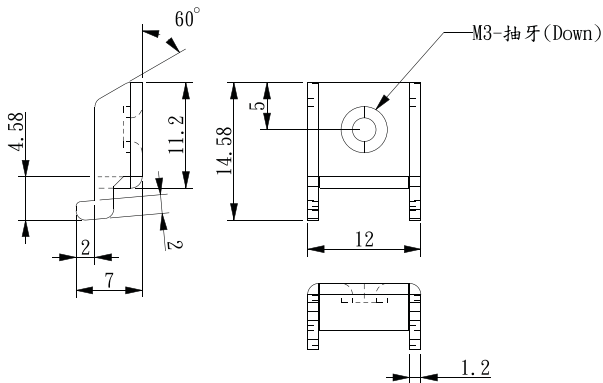
Mechanical	
Construction	Metal
IP Rating	Front Panel Compliant IP65
Mounting	Panel Mount VESA Mount 75x75
Dimension	308 x 241 x 55.9 mm

Environment	
Operating Temp	0~55 °C
Storage Temp	-20~70 °C
Humidity	10~90% @40 °C, non-condensing
Certificate	CE / FCC Class A

Dimension & I/O Connector



Mounting Kit



Ordering Information

04-US-26-00001	60 W / 12V power adapter with 3 pin terminal block (For LPC-121S)
04-US-26-00002	120 W / 24V power adapter with 3 pin terminal block (For LPC-121SH)
TS1GSK64W6H	8 GB DDR3L 1600 SO-DIMM
TS32GSSD420K	32 GB SSD , SATA3, MLC
TS64GSSD420K	64 GB SSD , SATA3, MLC
TS128GSSD420K	128 GB SSD , SATA3, MLC
TS16GMSA370	16GB, mSATA SSD, SATA3, MLC
TS32GMSA370	32GB, mSATA SSD, SATA3, MLC
TS64GMSA370	64GB, mSATA SSD, SATA3, MLC

Ordering Information

LPC-121S	12.1" Panel PC, Intel® Celeron® N3160, 4 GB DDR3L, 800 x 600 Reso, 350 nits, 4 COM, 4 USB, 2 LAN, DC 9~36V with 3-pin Power Terminal Block
LPC-121S-01	12.1" Panel PC, Intel® Celeron® N3160, 4 GB DDR3L, 1024 x 768 Reso, 500 nits, 4 COM, 4 USB, 2 LAN, DC 9~36V with 3-pin Power Terminal Block
LPC-121SH	12.1" Panel PC, Intel® Celeron® N3160, 4 GB DDR3L, 1024 x 768 Reso, 1000 nits, 4 COM, 4 USB, 2 LAN, DC 9~36V with 3-pin Power Terminal Block
WiFi Module kits	1. ZQ802XRN7-01 (802.11 b/g/n Half Mini Card) w/ Extended Bracket for full size 2. RFA-02-3-C52M3-B70 (WiFi Antenna) 3. BTC013-1-79-500 (WiFi cable 50 cm)
PB-936	Power Board for Input on board fuse / Input reverse protection / Over current protection / Output short circuit protection