

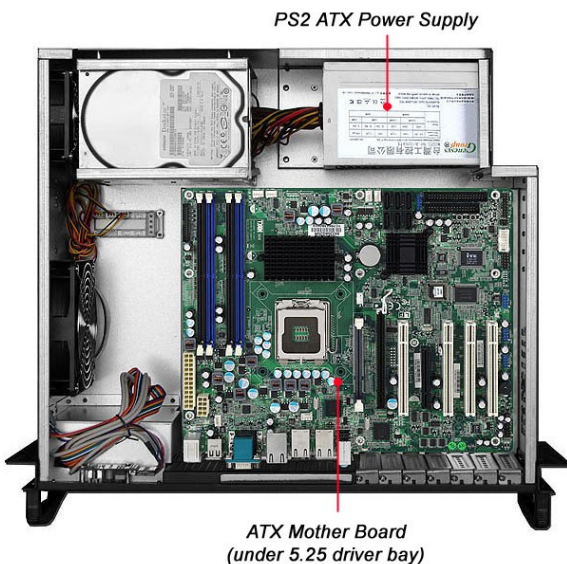
### Boîtier 4U Compact pour serveurs

CPN402 is a compact server chassis, Fit with standard ATX main board size performs the most efficient solution, depth=356mm, CPN402 is simple design and easy assembly & maintenance with Front access



### Features and Benefits

- Compact size to save space, Depth 14" (356mm)
- With Unique outward appearance design
- Anti-Shock 8 Drive Bays Total
- Front access USB2.0\*2



### Specification

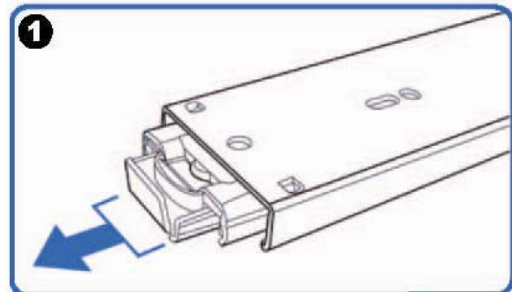
Dimension (W*H*D)	19" x 7" x 15"/ 482 x 177 x 382mm
Material Construction	Heavy-duty High-end SGCC steel Thickness:1.0mm
M/B Size	ATX (12"x 9.6")
Expansion	7slotsrearsideATX
Control & Indicator	1*Power switch +1* Reset switch 1 x LED (power) +1 x LED (HDD) 2*2.0 USB
Cooling Fans	1 x 12cm Fan +2 x 8cm (2ball bearing Delta brand)
DriveBay	2 x 5.25" + 6 x 3.5" (internal)

Power Supply	Standard PS-2 ATX or PS-2 size Mini-Redundant Power supply 300w~550w
Sliding rail	20" ball bearing sliding rail (option)
Color	Black / Beige
Operation Temperature	Up to 50C
Operation Humidity (Non-condensing)	Up to 90%
Packing Measurement CBF / CBM	2.4 / 0.06
Packing N.W / G.W	6.5KGS /7.5KGS

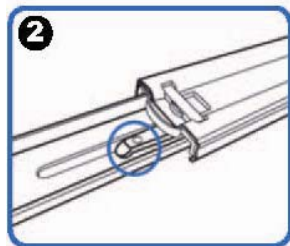
**Option: Three-Sections Heavy-Duty Solid Ball-Bearing Sliding Rail**

Features: Universal Design to match almost all chassis on market, Heavy-Duty Slide Ball Bearing  
 Built-in stop-latch, lock chassis in extended position for easy access ,  
 Simply pressing on the plastic levers on each side and slide your case back into the cabinet

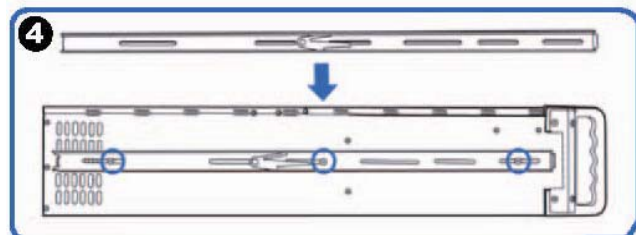
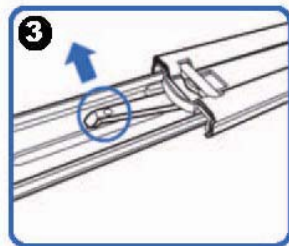
Warranty: 1 Year



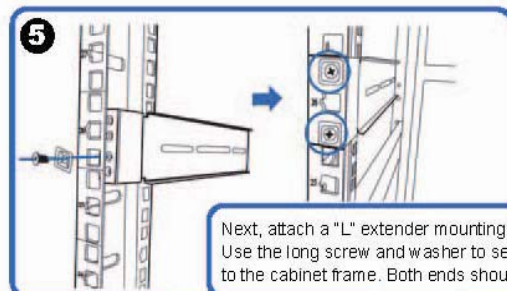
(Pull the center slide all the way out until it reaches the end)



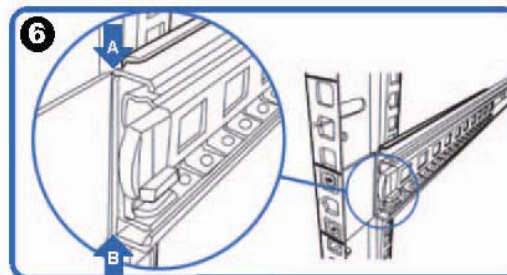
You will see a locking clip at the end point of the center slide. Push it down and unlock the center slide.



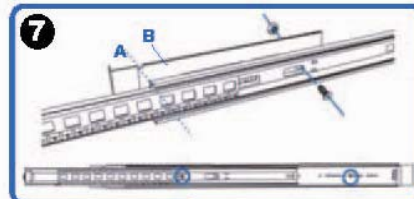
Now put the center slide right next to the rackmount chassis. You should be able to find screw holes on both sides of chassis. Holes are used for mounting the center slide. Later the center slide will be used for attaching the sliding rail.



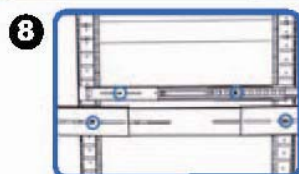
Next, attach a "L" extender mounting bracket on to the cabinet. Use the long screw and washer to secure the "L" extender bracket on to the cabinet frame. Both ends should have the extender bracket.



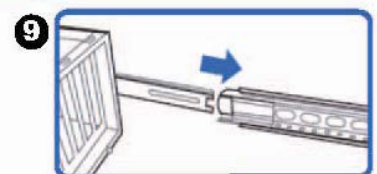
Align front outer rail to the indent of L bracket between Point A & B.



Secure outer rail to L bracket with screws and nuts.



Repeat previous steps to secure sliding rails on both sides.



Reattach inner rail back to center rail.