



Note: These items are not included in this package.

1. EPIA PX Mainboard
2. Hard Disk
3. RAM
4. Optical Drive



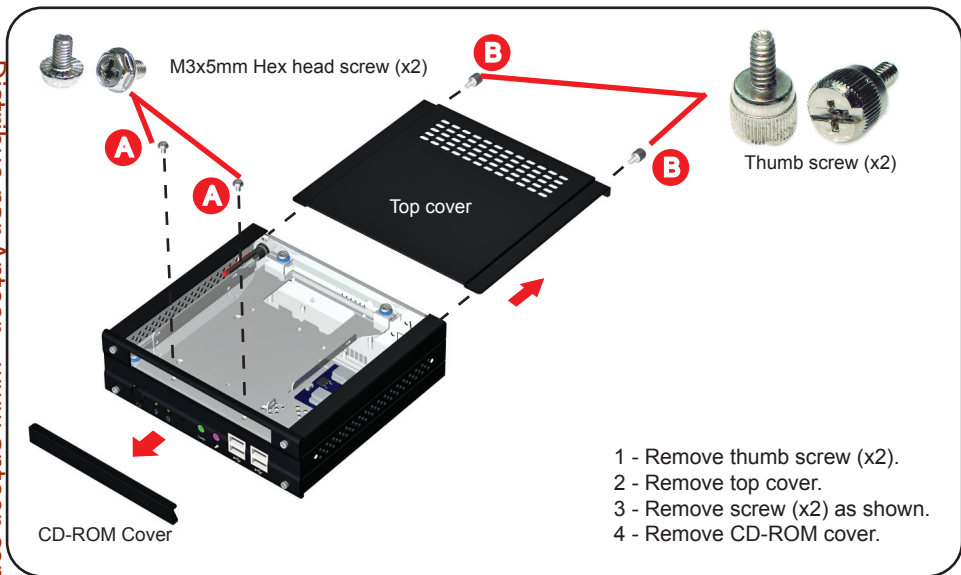
### Warning

Installation and service to this product should be performed by qualified personnel to avoid risk of injuries

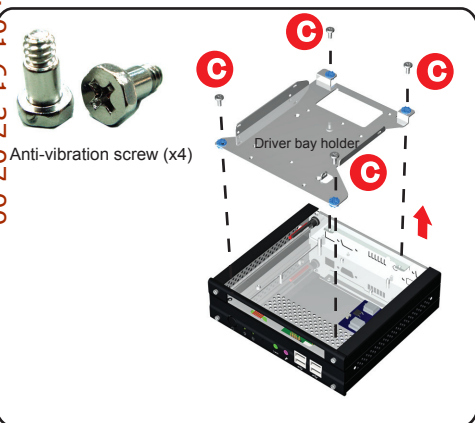
### Accessories: Screws



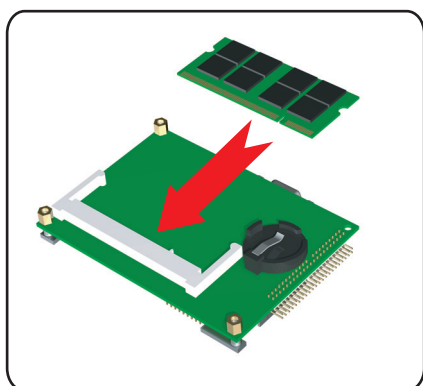
### 1) Remove Top Cover & CD-Rom Cover



### 2) Remove Driver Bay Holder

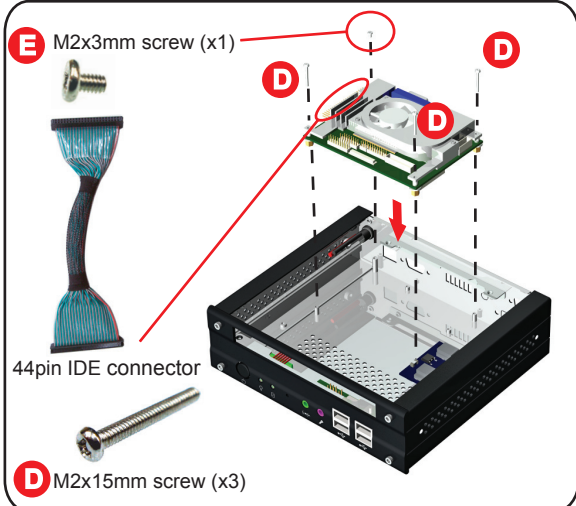


### 3) Install Memory Module



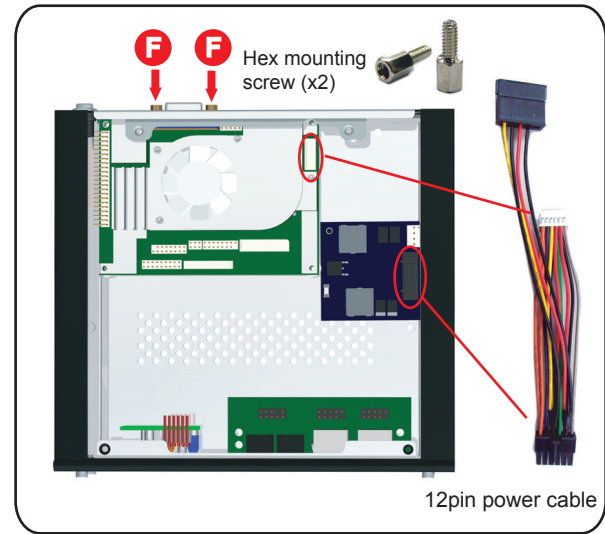
### 4) Install EPIA PX Mainboard to Chassis

- 1 - Insert 44pin IDE connector as shown.
- 2 - Place the EPIA PX Mainboard into the chassis.
- 3 - Fasten the board to the chassis by M2x3mm (x1) and M2x15mm(x3)screws.

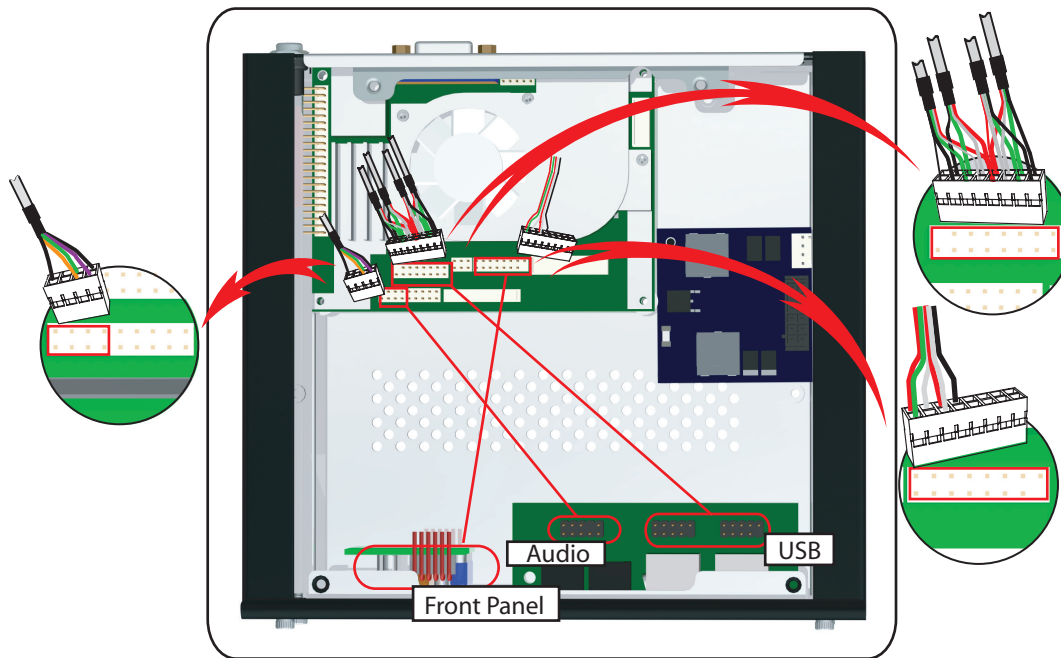


### 5) Install Power Cable

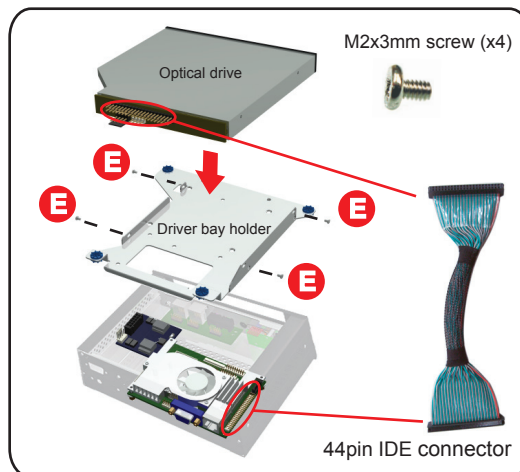
- 1 - Secure the VGA connector with the hex mounting screw (x2) as shown.
- 2 - Insert power cable as shown.



### 6) Install Front Panel/Audio/USB Cables



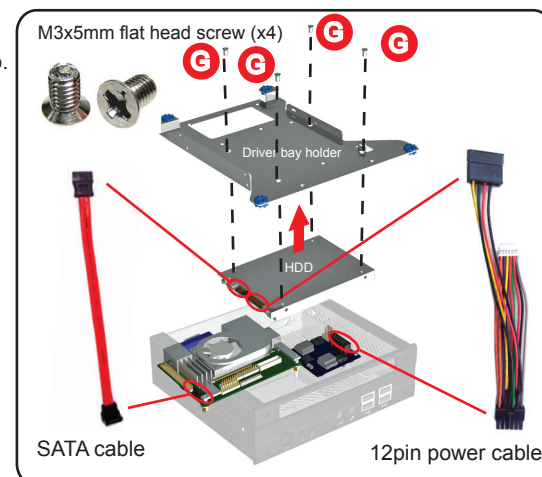
### 7) Install Optical Drive



- 1 - Secure M2x3mm screw (x4) on both sides.
- 2 - Insert 44pin IDE connector as shown.

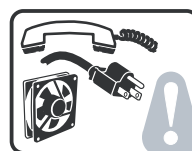
### 8) Install 2.5 inch Hard Drive

- 1 - Secure M3x5mm flat head screw (x4) from the top.
- 2 - Insert wires as shown.

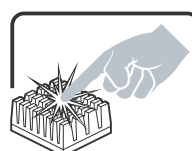


### Safety Cautions

SAFETY STEPS: When removing the chassis cover to access the system components, follow the safety precautions below:



1. Turn off all peripheral devices connected to the system.
2. Turn off the system by pressing the power button.
3. Unplug all AC power cords from the system or from wall outlets.
4. Label and disconnect all cables connected to I/O connectors or ports on the back of the system.
5. Wear an antistatic wrist strap grounded to the chassis -- any unpainted metal surface -- when handling components.
6. Do not turn on the system when the chassis cover is open.



The microprocessor and heatsink may be hot if the system has been running. Also, there may be sharp pins and edges on some board and chassis parts. Contact should be made with care. Consider wearing protective gloves.